

# Mantis Mega™

BACKBONE

## 單螢幕高載重氣壓式手臂 組裝說明書

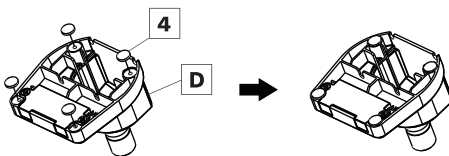
在開始組裝前，請閱讀說明手冊，如有任何不清楚之處，請即刻致電本公司尋求協助。  
Read the entire instruction manual before you start installation and assembly. If you have any questions regarding any of the instructions or warnings, please contact your local distributor for assistance.

### 零件 Accessories

<b>A</b>		<b>B</b>		<b>C</b>		<b>D</b>		<b>E</b>		桌夾式 For Clamp Mount		
										<b>F</b>	<b>G</b>	
(x1)		(x1)		(x2)		(x1)		(x1)				(x1)
<b>1</b>	<b>2</b>	桌孔式		<b>4</b>	桌夾式		桌孔式		<b>7</b>	<b>M-A</b>	<b>M-B</b>	<b>M-C</b>
										M4x12mm	M4x30mm	M5x12mm
(x1)	(x4)	(x1)		(x4)	(x1)		(x1)		(x1)			
										(x4)	(x4)	(x4)
										<b>M-D</b>	<b>M-E</b>	<b>M-F</b>
										M5x30mm	D5	Spacer
										(x4)	(x4)	(x4)

### STEP 1 **D** x1 **4** x4

將零件 **4** 安裝在零件 **D**  
Attach Four Foot Pads

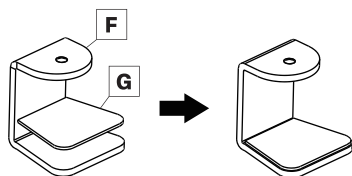


### A. 桌夾式 For Clamp Mount

#### STEP 2-1

將零件 **F** 和 **G** 組裝  
Attach The Protecting Pads

**F** x1  
**G** x1

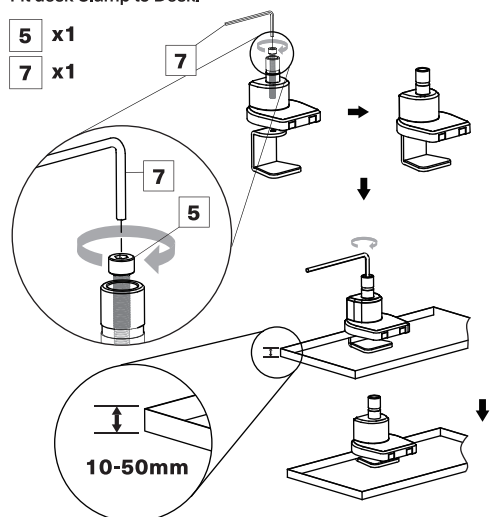


#### STEP 2-2

使用 **5** 螺絲將前兩步驟完成的零件固定在桌板並用 **7** 板手鎖緊

Attach Fixing Plate to Arm Assembly.  
Fit desk Clamp to Desk.

**5** x1  
**7** x1



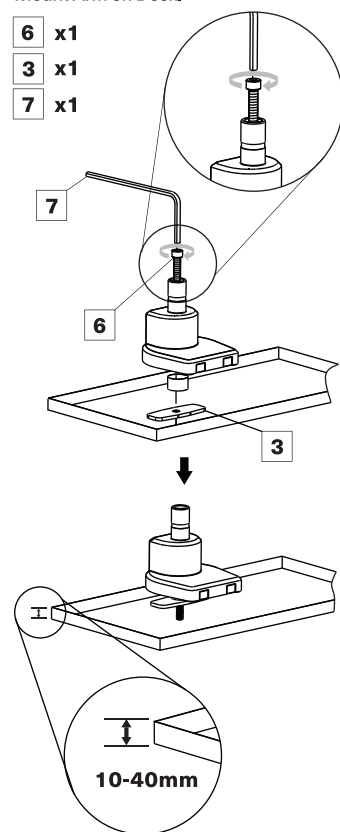
### B. 桌孔式 For Grommet Mount

#### STEP 2

使用 **6** 螺絲將前一步驟完成的零件和零件 **3** 使用板手 **7** 固定在桌板上

Attach Grommet Plate to Arm Assembly.  
Mount Arm on Desk.

**6** x1  
**3** x1  
**7** x1



待完成前面兩步驟後，

請執行STEP3 即可完成固定！

After assembling the first two steps, please continued to finish STEP 3.

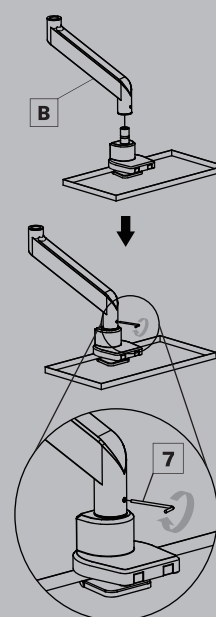
### STEP 3

將零件 **B** 和已組裝好的零件使用

使用 **7** 板手鎖緊

Assemble the Basearm

**B** x1  
**7** x1

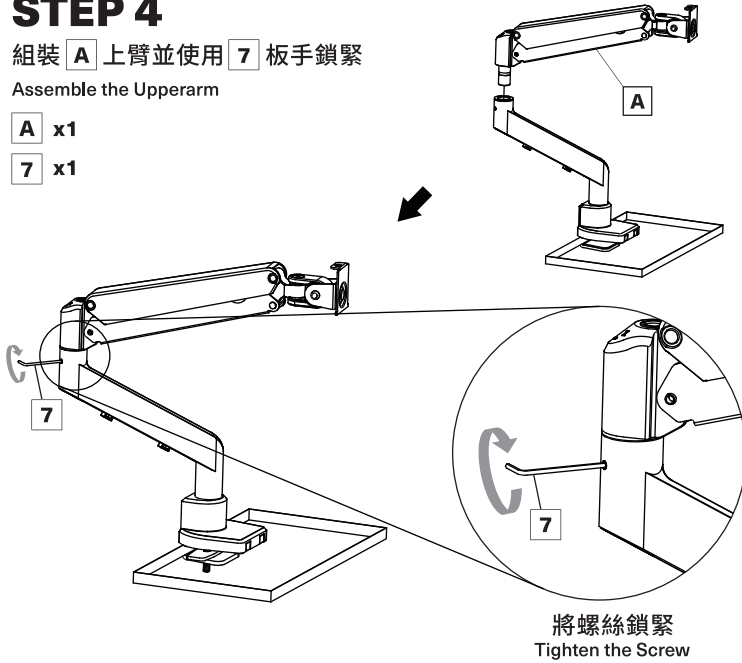


將螺絲鎖緊  
Tighten the Screw

## STEP 4

組裝 **A** 上臂並使用 **7** 扳手鎖緊  
Assemble the Upperarm

- A** x1
- 7** x1

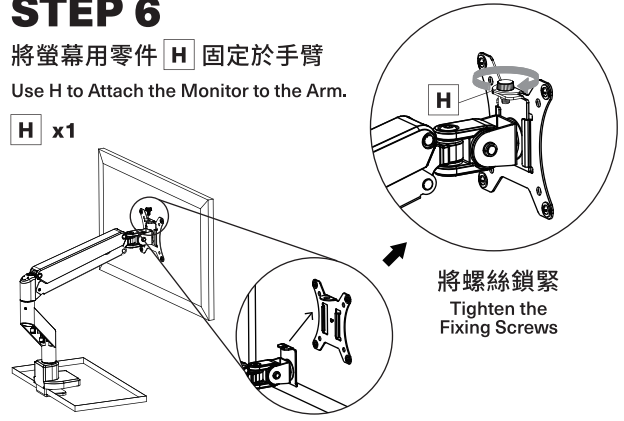


將螺絲鎖緊  
Tighten the Screw

## STEP 6

將螢幕用零件 **H** 固定於手臂  
Use H to Attach the Monitor to the Arm.

- H** x1

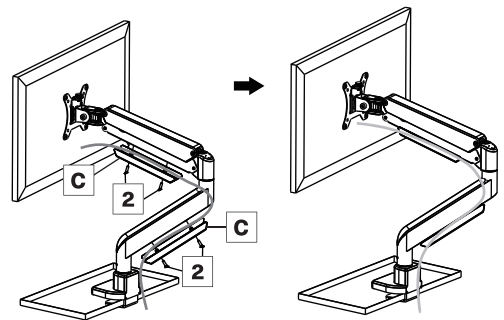


將螺絲鎖緊  
Tighten the Fixing Screws

## STEP 7

沿著螢幕手臂拉整電線，並用 **2** 將整線蓋 **C** 固定  
Route the Cables firstly, then use I to attach the cable covers C.

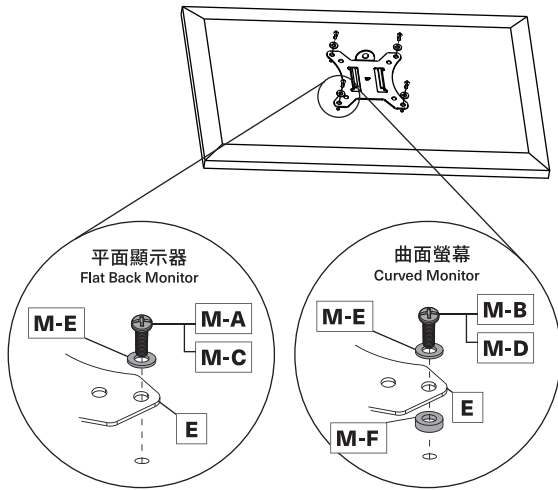
- C** x2
- 2** x4



## STEP 5

請依螢幕規格使用對應零件，將零件 **E** 固定於螢幕  
Please Check the Monitor to Choose Proper Bolts

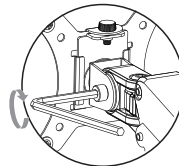
- E** x1
- M-A** x4
- M-B** x4
- M-C** x4
- M-D** x4
- M-E** x4
- M-F** x4



注意：如懸掛超過所示重量的產品，可能會導致不穩定、電器損傷，請多加注意。  
**CAUTION:** Use with products heavier than the rated weights indicated may result in instability causing possible injury.

## STEP 8

根據您的螢幕重量調整力值  
Adjust the loading capacity according to the weight of the screen



若顯示器位置與高度不符需求，可適當轉緊圖示螺絲

If the display does not stop at your desired position, tighten the screws as shown.



順時針方向減輕力值，逆時針為增加氣壓強度，請反覆測試直到螢幕位於正確位置

Turn clockwise to reduce tension and counter-clockwise to increase tension till the monitor holds its position when you let it go.



請注意：切勿過度扭緊螺絲！  
**CAUTION: DO NOT** over tighten the screws.



安裝完成！ The Assembly Completed!

### 注意事項 Attention

1. 必須按照組裝說明的規定安裝支架，安裝不當可能會導致損壞或嚴重的人身傷害。
2. 必須使用適當的裝備，如非以正確方式安裝導致物品損壞或造成傷害，請自行負責。
3. 確保支撐面能夠安全地支撐設備和所有附屬設備的總重量(硬件和組件)。
4. 使用提供的安裝螺絲，不要過度扭緊，容易導致商品損壞。
5. 本產品含有細小零件，誤食可能會導致窒息，請放置於孩童無法取得處。
6. 本產品僅供室內使用。在戶外使用本產品，可能會導致產品故障或人身傷害。
7. 重要提示：在安裝之前，請先盤點組件清單中所有部件，如有任何部件缺失或故障，請致電本公司進行更換。
8. 維護：定期(至少每三個月)檢查支架是否牢固，且可以安全使用。

1. Mounts must be attached as specified in assembly instructions, improper installation may result in damage or serious personal injury.
2. Safety gear and proper tools must be used. This product should only be installed by professionals.
3. Make sure that the supporting surface will safely support the combined weight of the equipment and all attached hardware and components.
4. Use the mounting screws provided and DO NOT OVER TIGHTEN mounting screws.
5. This product contains small items that could be a choking hazard if swallowed. Keep these items away from children.
6. This product is intended for indoor use only. Using this product outdoors could lead to product failure and personal injury.
7. IMPORTANT: Ensure that you have received all parts according to the component checklist prior to installation. If any parts are missing or faulty, contact your local distributor for a replacement.
8. MAINTENANCE: Check that the bracket is secure and safe to use at regular intervals (at least every three months).