

Product Specification

Product :	QuickBlue Protein Gel Staining
Product Number :	BDCWB15
Package :	500 mL
Storage :	RT and protect from light

INTRODUCTION

QuickBlue Protein Gel Staining is a protein gel dye without the need to gel fixation and de staining . Also, the indigents don't contain methanol or acetic acid which are harmful and repulsive. It's a simple, time saving and safe new generation staining method for replacing the traditional Coomassive blue staining.

CONTENTS

Component	BDCWB15
QuickBlue Protein Gel Staining	500 mL

PROTOCOL

1. Remove the gel from the electrophoresis tank and put it in the staining tank.
2. Soak gel in adequate QuickBlue Protein Gel Staining with gentle shaking for 10 - 20 minutes

Note :

- a. For extremely high sensitivity experiment, it is generally possible to dye for 1 - 2 hours (10 ng protein can be detected)
 - b. If the gel background is high, soaking the gel in water and replace water 4 times within 2hrs.
3. Store the staining gel in water.

Product Specification

Product :	QuickBlue Protein Gel Staining
Product Number :	BDCWB15
Package :	500 mL
Storage :	RT and protect from light

RESULTS

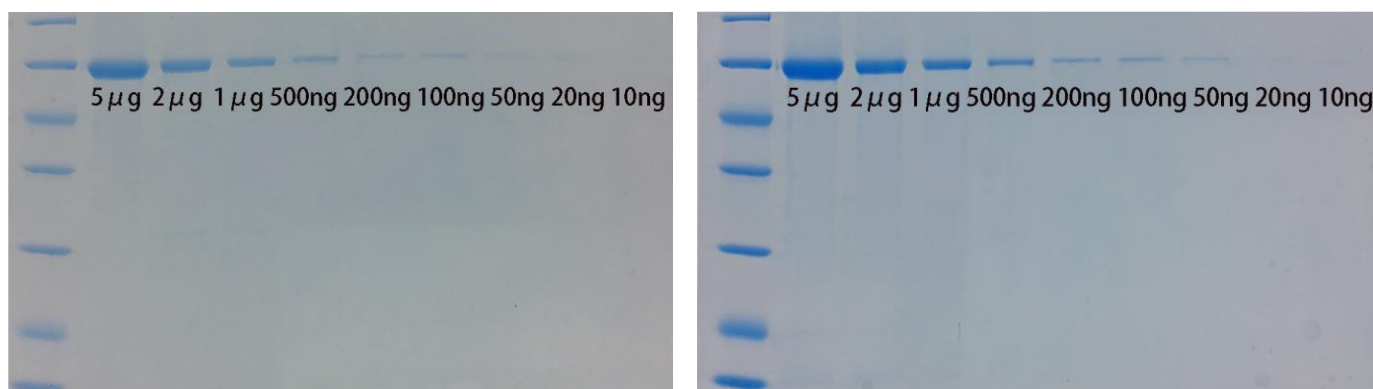


Figure 1: The result of SDS-PAGE with staining for 20 mins (left) and 60 mins (right).

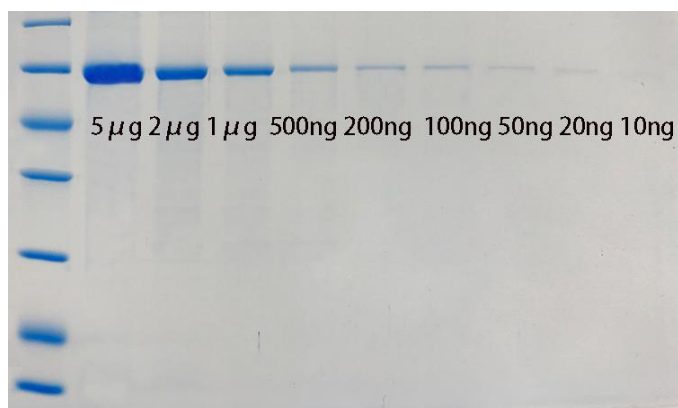


Figure 2: The gel background can be completely clear after shaking in water for 2hrs.

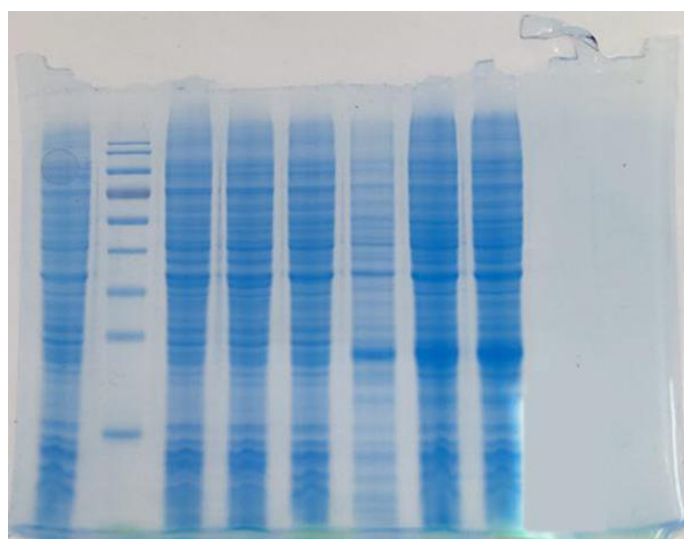


Figure 3: Customer review.